

IN-LINE SIFTER

FOR PNEUMATIC CONVEYORS

Powder Technic Inline sifters can be used for the screening of powders and granular materials as part of a pneumatic conveyor line. Our Inline sifters can be used with both vacuum and overpressure lines.

OPERATING PRINCIPLE

Material to be screened during operation is fed into the feeder port of the screen. The powder is run inside the screen to the drum section, where blades turning in the direction of the drum force the material through the drum. The material passing through the drum is ejected through the discharge port at the bottom of the screen.

THE STEEL PLATE SCREEN DRUM GUARANTEES DURABILITY

Made of perforated steel plate, the screen drum offers unparalleled reliability, durability and economy compared to conventional nylon/steel mesh drums.

WIDE CAPACITY RANGE

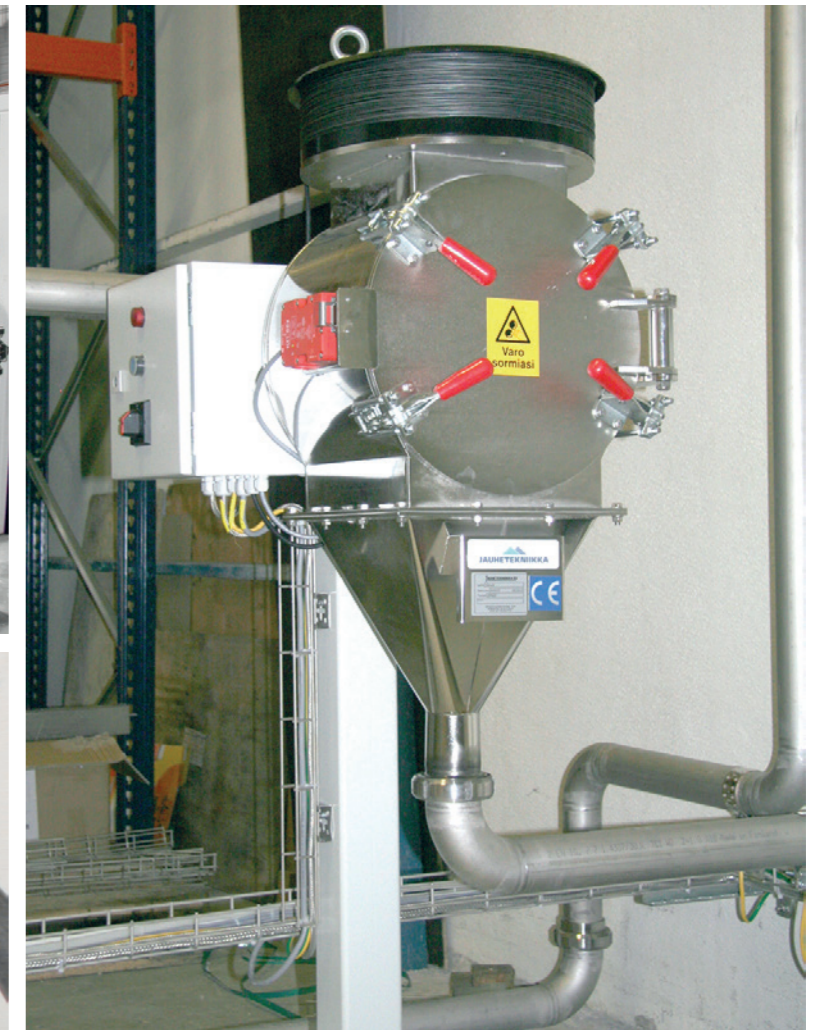
Wide capacity range, depending on the material being screened and screen perforation size: 1-15 t/h

EASY TO CLEAN

Thanks to the hinged hatch, the screen drum is easy to inspect or change when switching grades.

RELIABLE EQUIPMENT CONSTRUCTION

Our expertise in material handling ensures operational reliability. We use only the highest quality materials and components.



SUITABLE FOR USE IN THE SCREENING OF NEARLY ALL TYPES OF POWDER, INCLUDING EXPLOSIVE MATERIALS

Construction: carbon steel or stainless steel
Screen drum perforation size: 0.15-10 mm
ATEX 20/21 zone classification inside,
ATEX 22/unclassified outside

